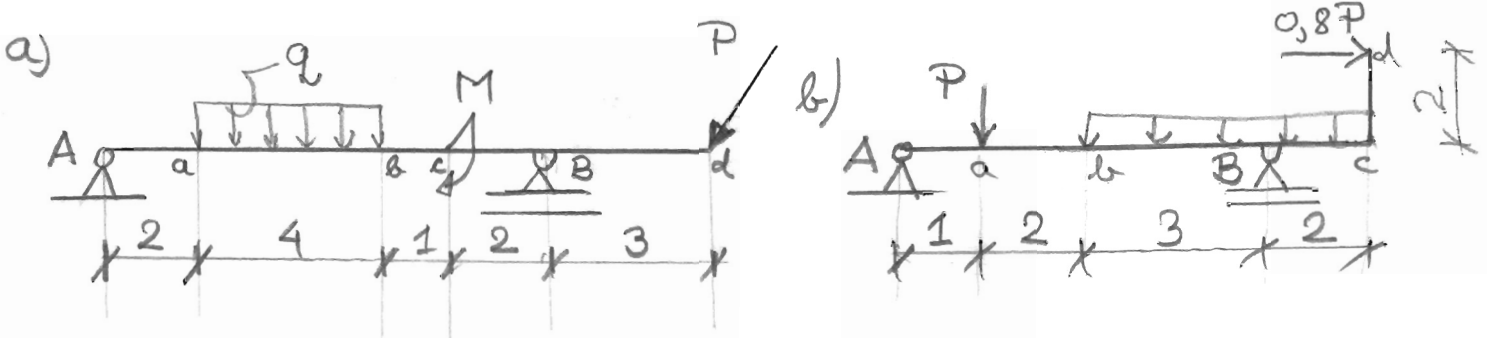
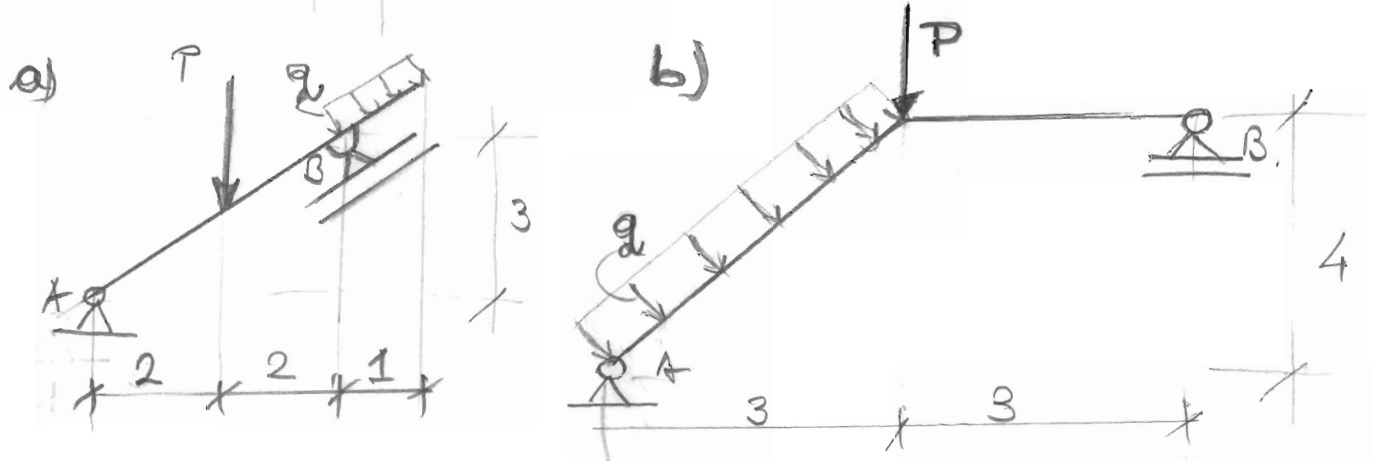


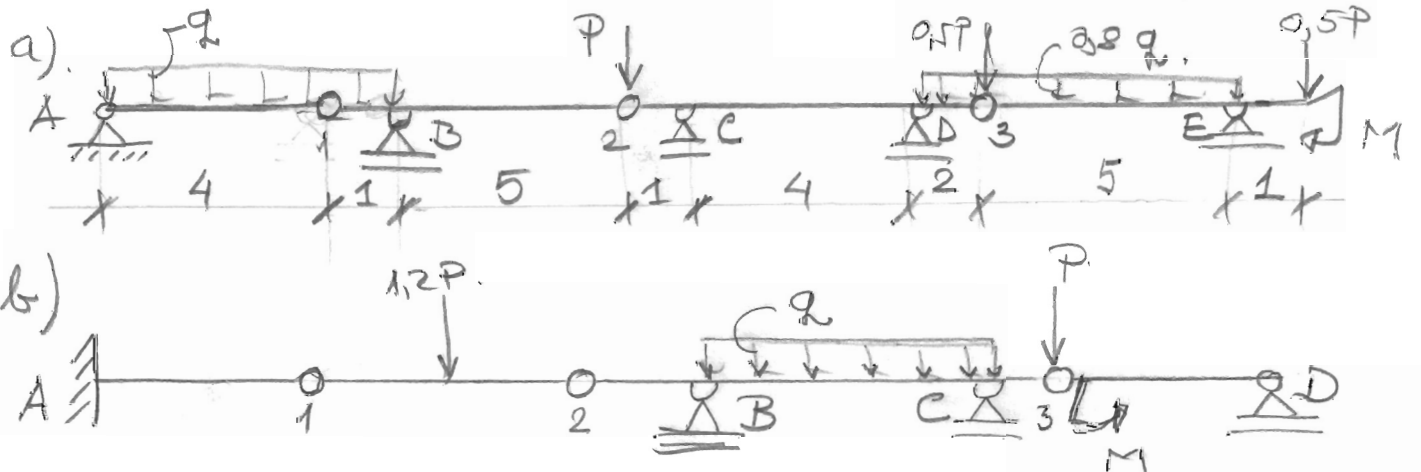
1.



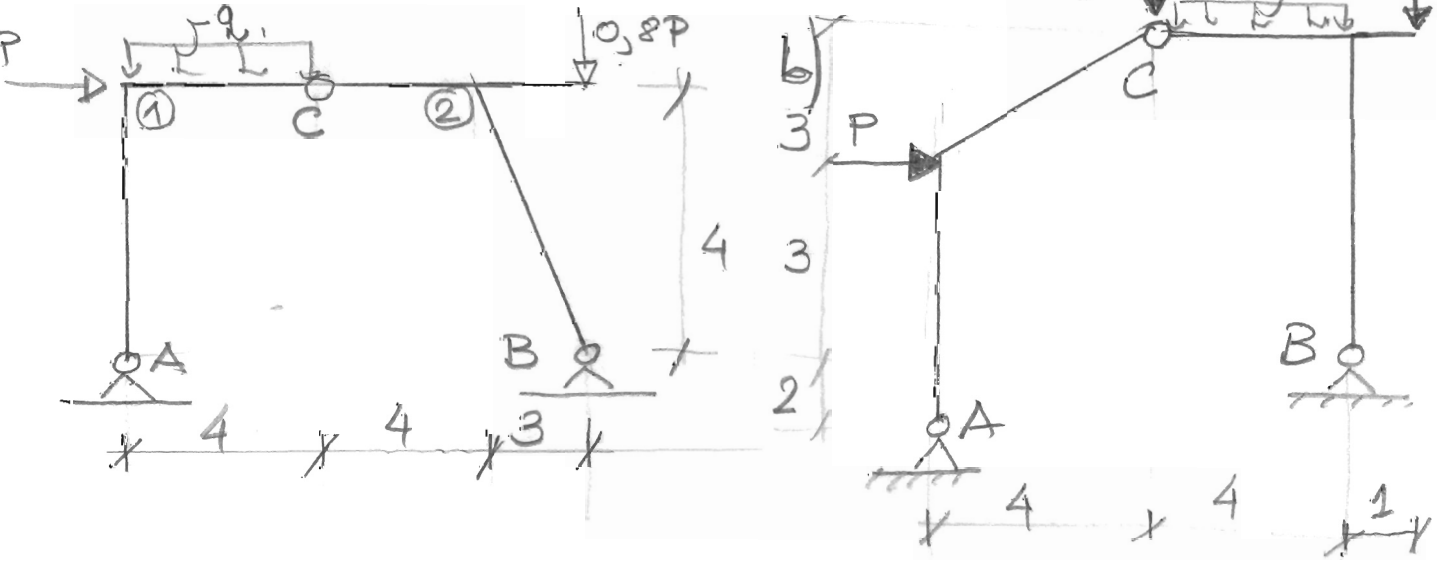
2.



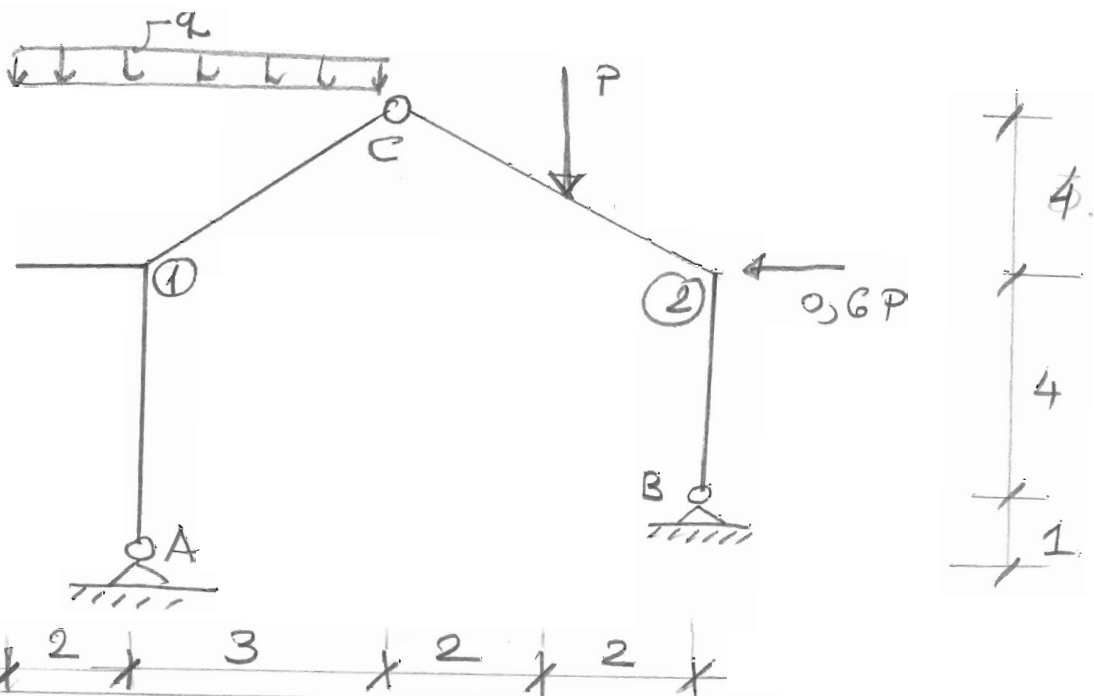
3.



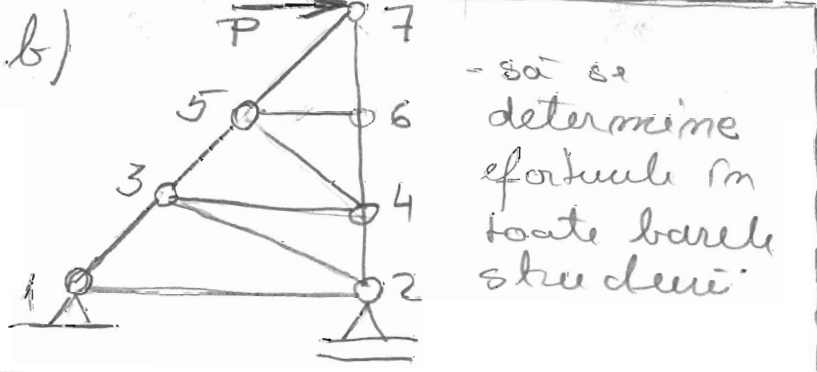
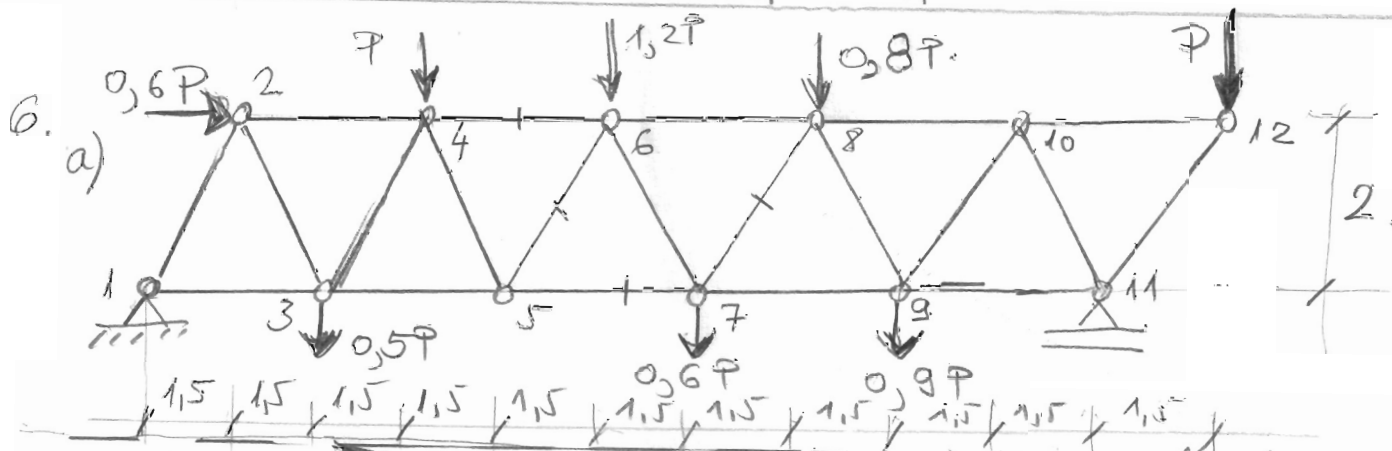
4.



5.



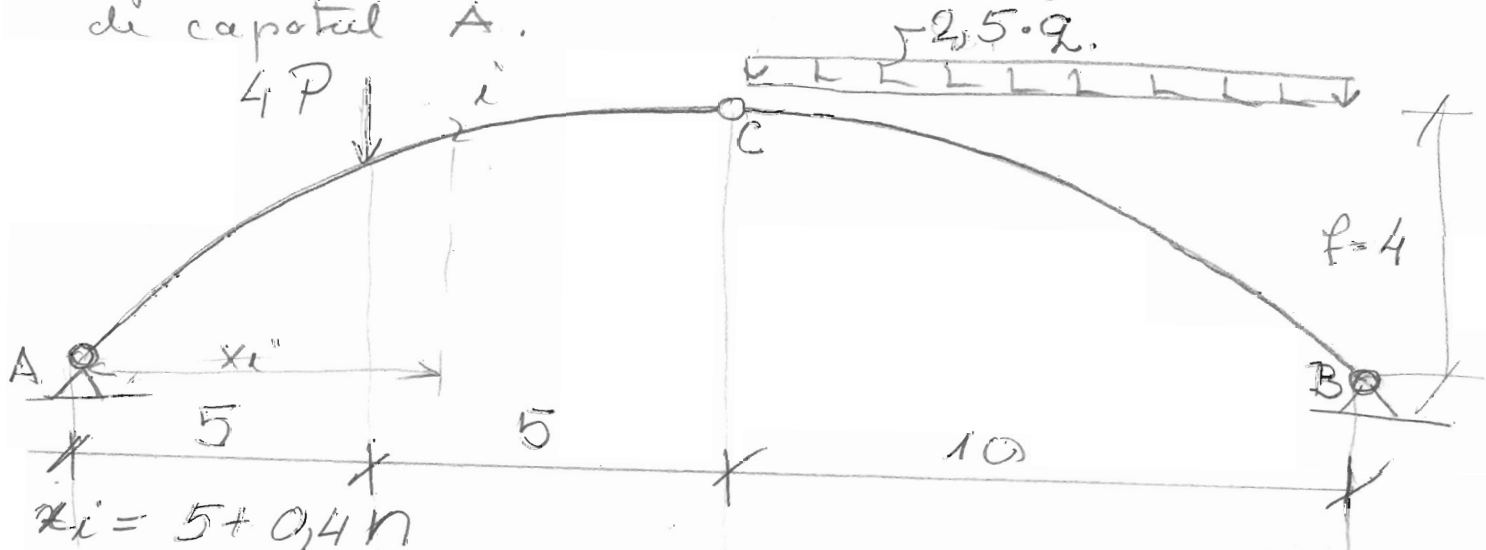
6.



- să se determine eforturile în toate barele studiate

a) să se calculeze eforturile în barele marcate:
 $N_{4-6} = ?$, $N_{5-6} = ?$
 $N_{5-7} = ?$, $N_{7-8} = ?$

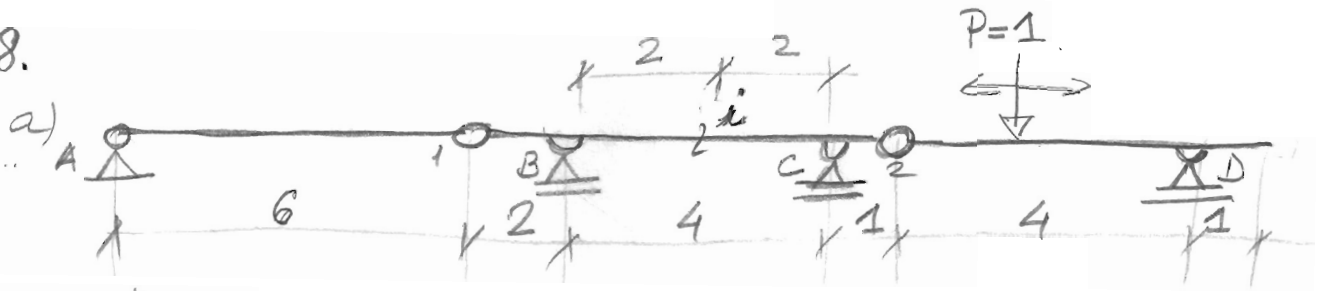
7. Pentru arcul circular din figura, să se determine eforturile din secțiunea i, situată la x_i de capătul A.



$x_i = 5 + 0,4n$

Se traseze liniile de influență pentru următoarele structuri;

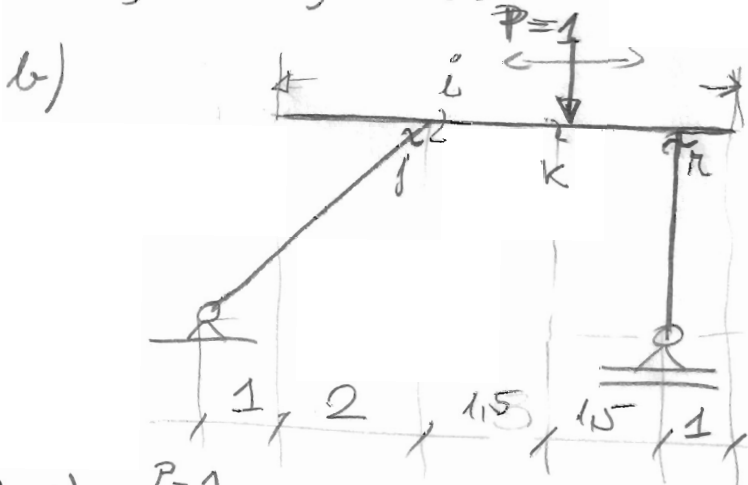
8.



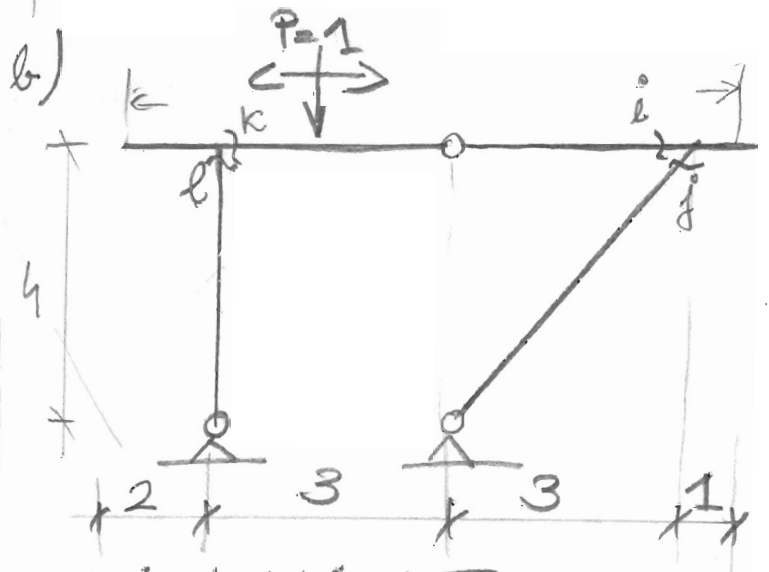
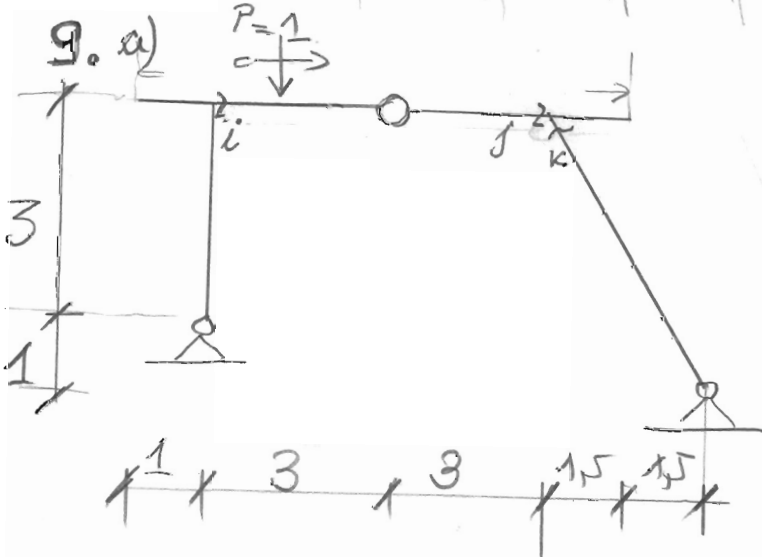
seria A
 L_{TB}^{st} , L_{TB}^{dr} , L_{VB} , L_{MB}

seria B
 L_{VC} , L_{TC}^{st} , L_{TC}^{dr} , L_{MC}

seria C
 L_{Ti} , L_{Mi} , L_{VD} , L_{MD}



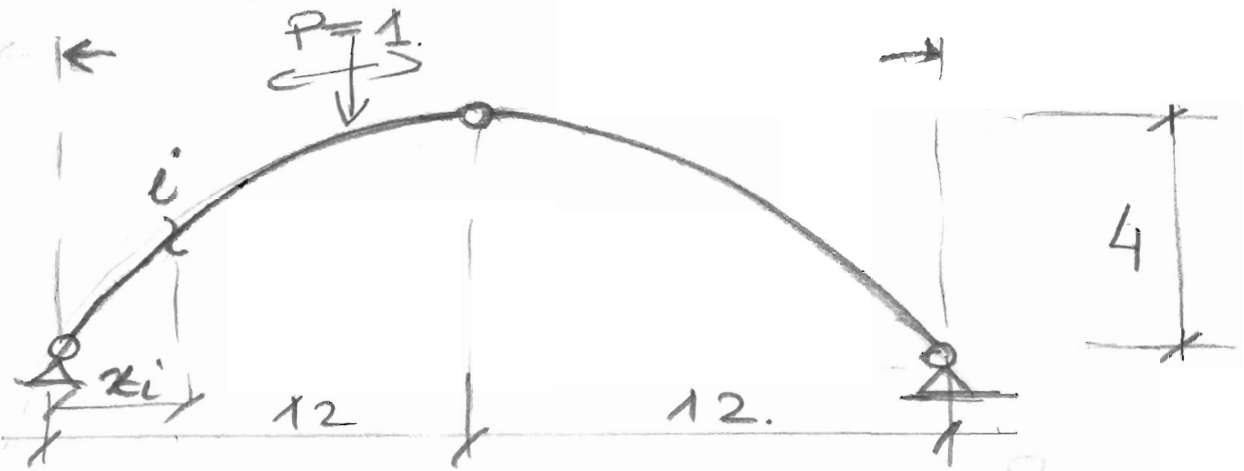
seria A: L_{Mi} , L_{Tk} , L_{Nj}
 4 seria B: L_{Mk} , L_{Tj} , L_{Mn}
 seria C: L_{Mj} , L_{Tl} , L_{Nj}



seria A: L_{Mi} , L_{Tk} , L_{Nj}
 seria B: L_{Mj} , L_{Ti} , L_{Nk}
 seria C: L_{Mk} , L_{Tl} , L_{Ni}

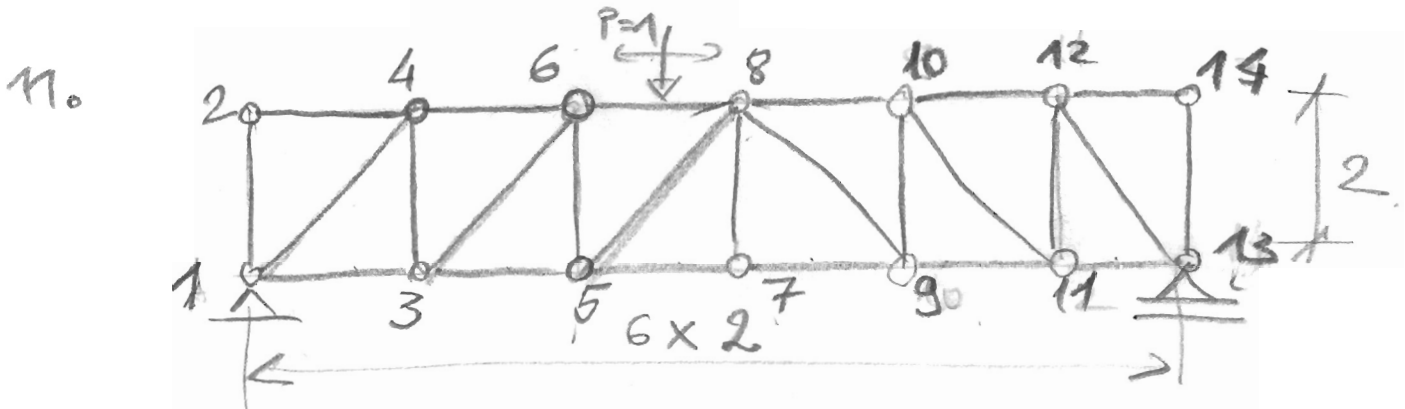
seria A: L_{Mj} , L_{Ti} , L_{Me}
 seria B: L_{Mk} , L_{Tj} , L_{Ni}
 seria C: L_{Mi} , L_{Tl} , L_{Nj}

10. Pt. arcul parabolic din fig., se se traseze limitele de infl. ale ef. fm secunec i la xi fati de reazemul A.



seria A: $x_i = 22 - 0,5n$ (m)
seria B: $x_i = 3 + 0,2n$ (m)
seria C: $x_i = 20 - 0,4n$ (m)

} LM_i, LT_i, LN_i



seria A: $LN_{3-6}, LN_{4-6}, LN_{5-7}, LN_{9-10}$
seria B: $LN_{5-8}, LN_{7-9}, LN_{8-10}, LN_{5-6}$
seria C: $LN_{8-9}, LN_{7-8}, LN_{3-5}, LN_{6-8}$

seria A: $P = 20 + 0,5n$ (kN); $q = 10 + 0,4n$ (kN/m); $M = 30 + n$ (kNm)

seria B: $P = 25 + 0,4n$ (kN); $q = 12 + 0,4n$ (kN/m); $M = 40 + 0,5n$ (kNm)

seria C: $P = 22 + 0,5n$ (kN); $q = 15 + 0,2n$ (kN/m); $M = 35 + n$ (kNm)